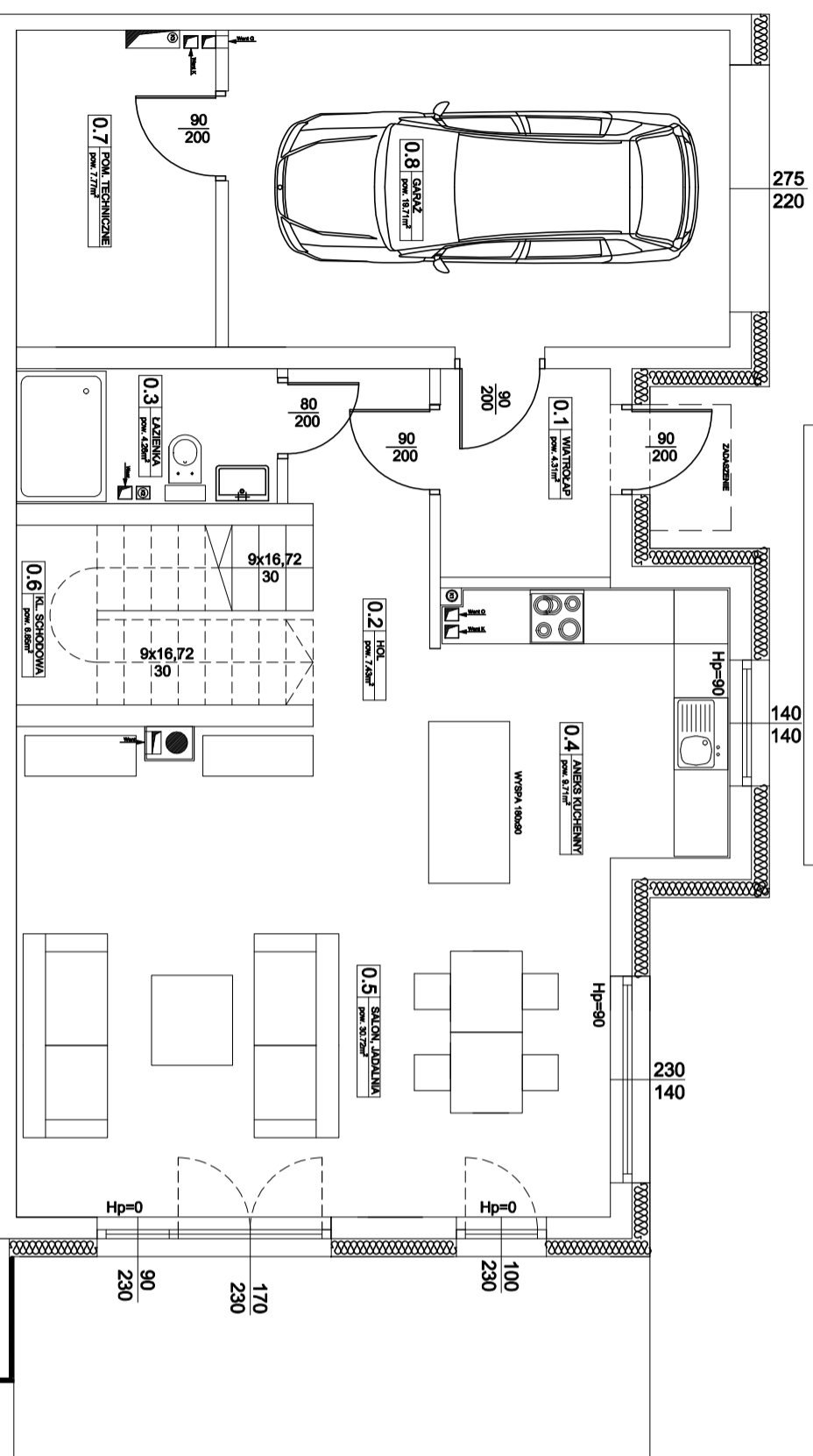
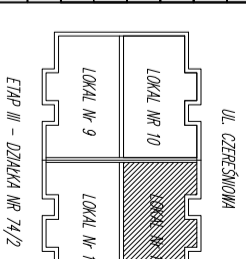


LOKAL NR 12 - PARTER

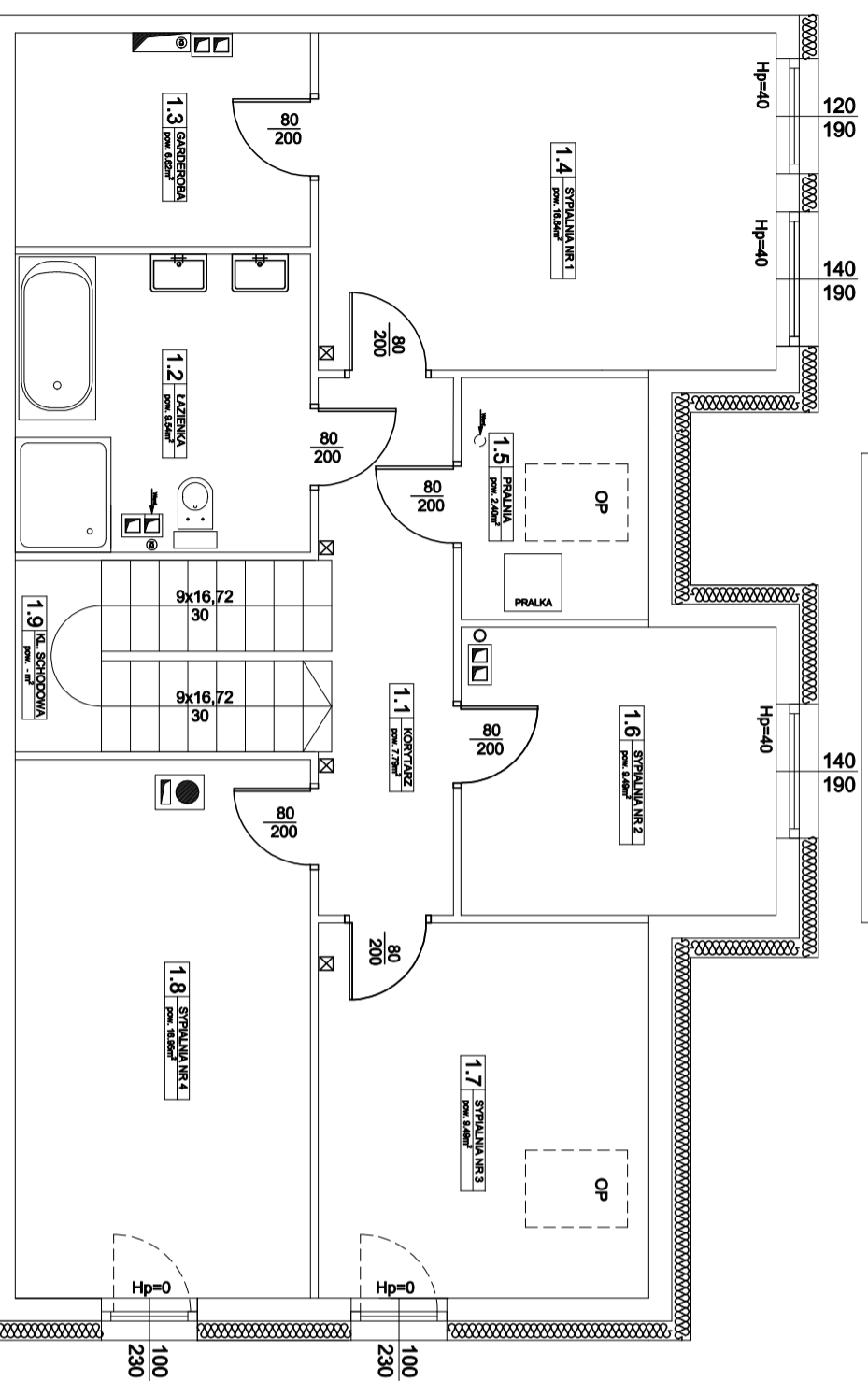


LOKAL NR 12 - PARTER

0.1	WIATROLAP	4,31
0.2	HOL	7,43
0.3	ŁAZIENKA	4,26
0.4	ANIEKS KUCHENNY	9,71
0.5	SALON, JADALNIA	30,72
0.6	KL. SCHOD.	6,65
		63,08
0.7	POM. TECHNICZNE	7,77
0.8	GARAŻ	19,71
		27,48

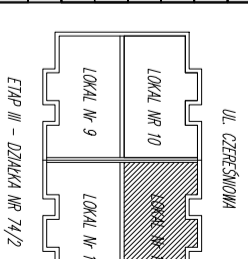


LOKAL NR 12 - PIĘTRO



LOKAL NR 12 - PIĘTRO

1.1	KORYTARZ	7,79
1.2	ŁAZIENKA	9,54
1.3	GARDEROBA	6,62
1.4	SYPIALNIA NR 1	16,64
1.5	PRALNIA	2,40
1.6	SYPIALNIA NR 2	9,49
1.7	SYPIALNIA NR 3	9,49
1.8	SYPIALNIA NR 4	16,95
1.9	KL. SCHODOWA	-
		78,92



LOKAL NR 4 - RAZEM

1	PARTER	63,08
2	PARTER TECH.	27,48
3	PIĘTRO	78,92
		169,48