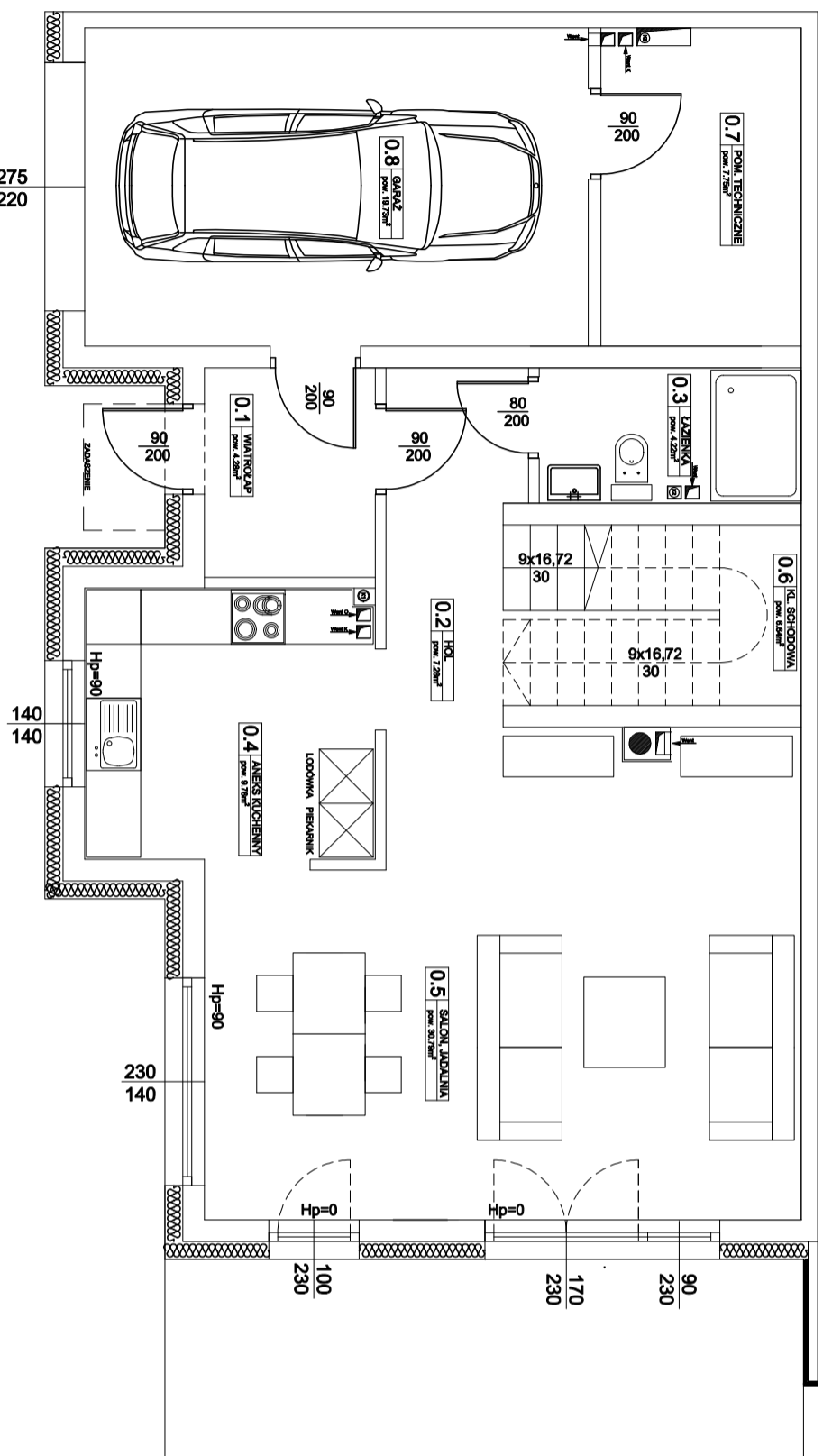
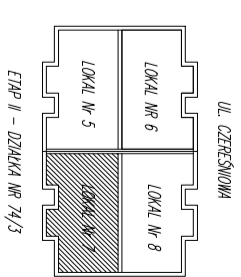


LOKAL NR 7 - PARTER

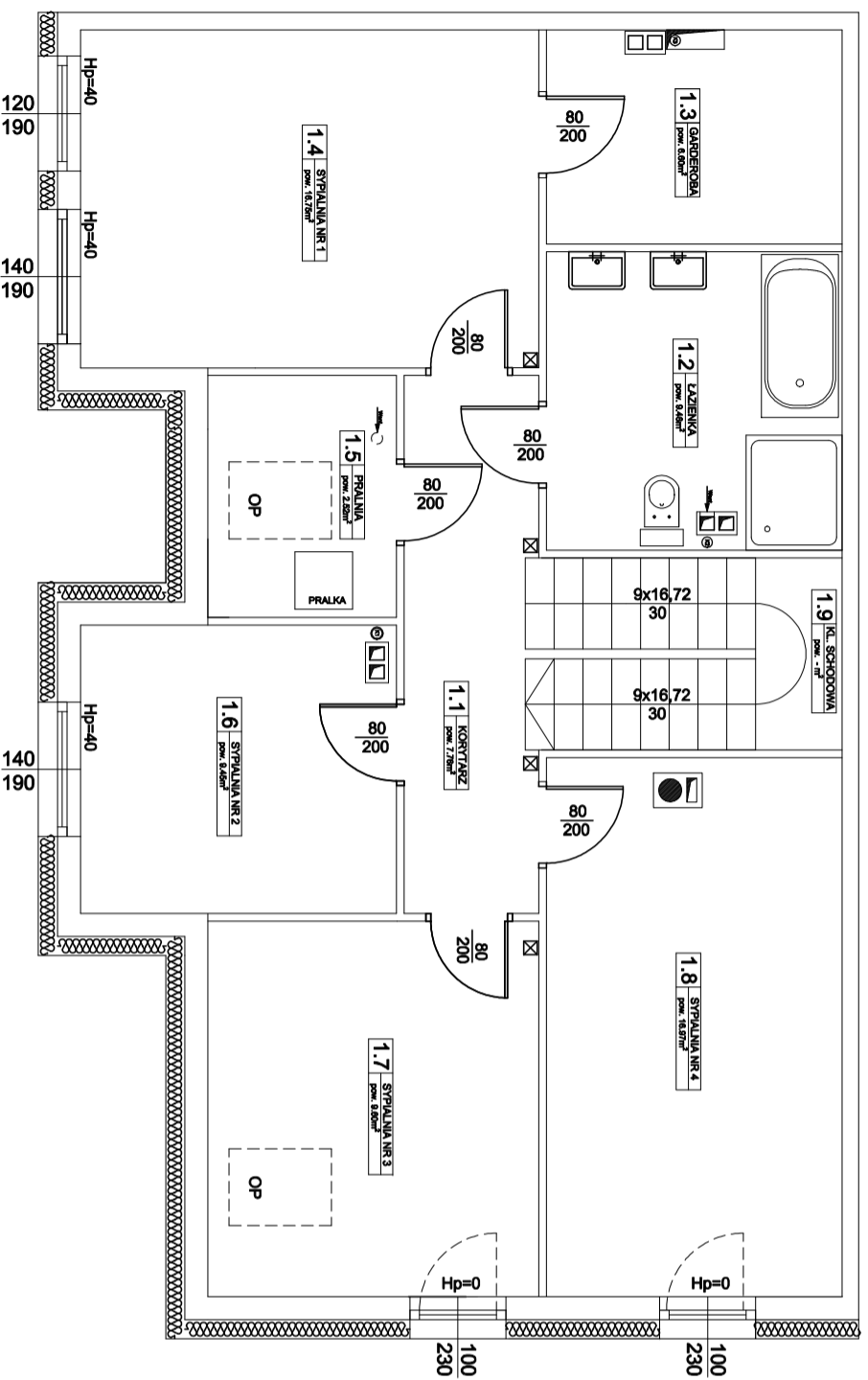


LOKAL NR 7 - PARTER

0.1	WIATROLAP	4,28
0.2	HOL	7,28
0.3	ŁAZIENKA	4,22
0.4	ANEKS KUCHENNY	9,78
0.5	SALON, JADALNIA	30,79
0.6	KL. SCHOD.	6,64
		62,99
0.7	POM. TECHNICZNE	7,75
0.8	GARAZ	19,73
		27,48

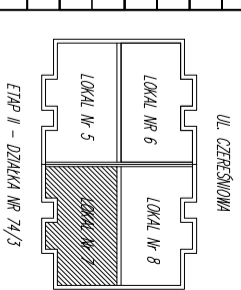


LOKAL NR 7 - PIĘTRO



LOKAL NR 7 - PIĘTRO

1.1	KORYTARZ	7,76
1.2	ŁAZIENKA	9,46
1.3	GARDEROBA	6,80
1.4	SYPIALNIA NR 1	16,75
1.5	PRALNIA	2,52
1.6	SYPIALNIA NR 2	9,45
1.7	SYPIALNIA NR 3	9,60
1.8	SYPIALNIA NR 4	16,97
1.9	KL. SCHODOWA	-
		79,11



LOKAL NR 3 - RAZEM

1	PARTER	62,99
2	PARTER TECH.	27,48
3	PIĘTRO	79,11
		169,58